



RAPIDSEAL™

An innovation by SOLYD

For 40 years, SOLYD in partnership with actors in the field has been offering **innovative and high-performance solutions** for connecting DRINKING WATER to homes worldwide. Our high quality equipments are designed to fight against Non Revenus Water (NRW). We offer innovative and powerful solutions for water authorities.

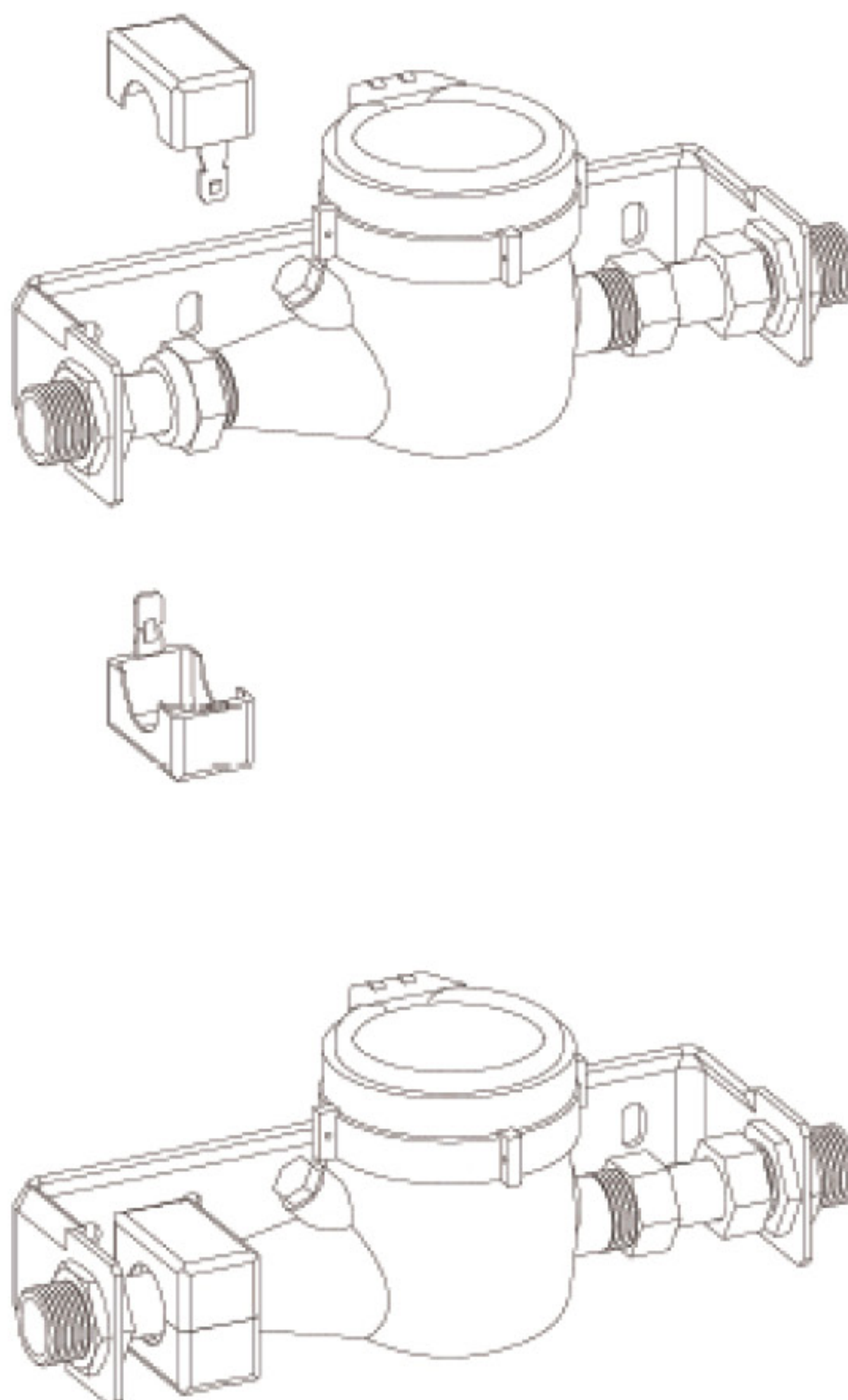
Our sealing clamp « **RAPID SEAL™** » complies with all your requirements. They quickly and easily secure the installation against all kind of water meters' frauds.

CUSTOMIZABLE SEALING CLAMPS FOR WATER METER



**The RAPIDSEAL™
Sealing Clamps
allows very easily:**

- Ready to install and quick installation,
- Simplicity,
- Reliability and innovation,
- Imputercible,
- Unbeatable,
- Undeformable.



If you do not know the length of the meter (110 or 170), these models allow you to adapt to both situations.

Any other assembly possible on request.



| Flow limiter | | | | |
|--------------|---------------|------------------|-----------|------------|
| Item code | Designation | Dimensions in mm | | |
| | | Ø outside | Thickness | Ø the hole |
| 34025 | For nut 20/27 | 23 | 2 | 1 |
| 33620 | For nut 26/34 | 30 | 2 | 1 |
| 33625 | For nut 33/42 | 38 | 2 | 1 |
| 33621 | For nut 40/49 | 44 | 2 | 1 |
| 33624 | For nut 50/60 | 56 | 2 | 1 |

| 3 bar test | |
|------------|---------------|
| Ø du trou | Litre/ minute |
| 1 mm | 1.5 Liters |
| 2 mm | 3 Liters |
| 3 mm | 10 Liters |

| Sealing disc (solid, without hole) | | | |
|------------------------------------|---------------|------------------|-----------|
| Item code | Designation | Dimensions in mm | |
| | | Ø outside | Thickness |
| 104417 | For nut 20/27 | 23 | 2 |
| 104419 | For nut 26/34 | 30 | 2 |
| 104421 | For nut 33/42 | 38 | 2 |
| 104423 | For nut 40/49 | 44 | 2 |
| 104424 | For nut 50/60 | 56 | 2 |

T ° -50 ° to + 90 °
Hardness 66 Shore D

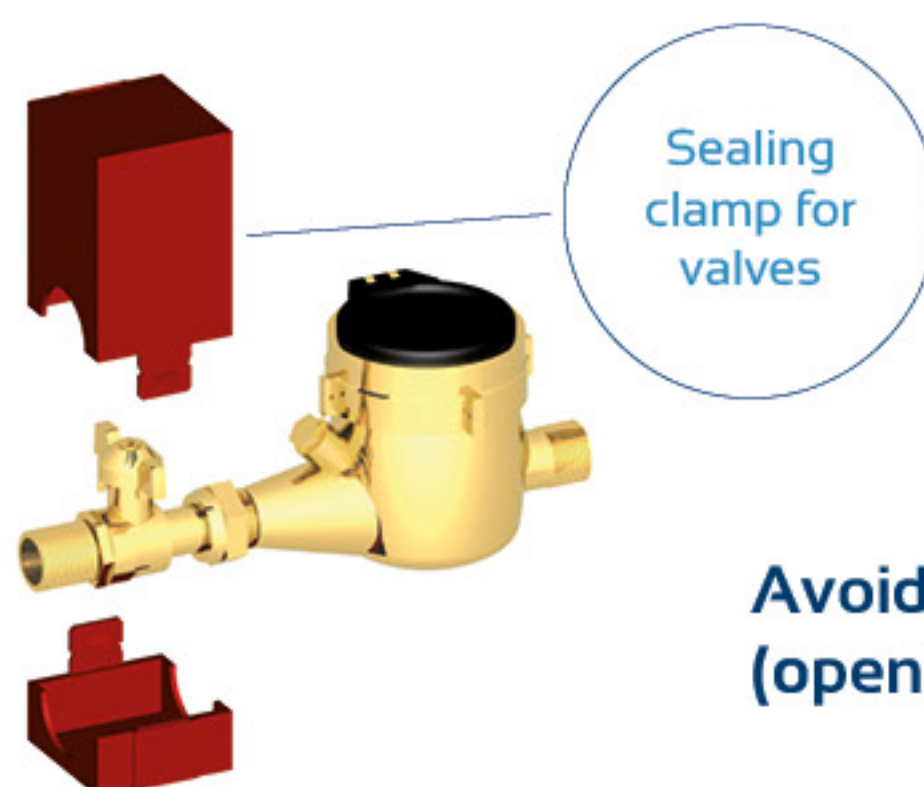
CHARACTERISTICS OF THE RAPIDSEAL™ SYSTEM

RAPIDSEAL™

- Quick installation, especially in manholes.
- Simplicity: avoids pliers and sinkers.
- Rot-proof, non-stick, non-deformable.
- Reliability, inviolability.
- Service security.
- Personalized marking with the name of the service, depending on the quantities.
- All diameters: 15, 20, 25, 30, 40 and 50 mm.
- Easy identification of the different diameters by writing the diameter inside the shell.
- Special colors and markings on request.
- Patented system.



ALSO AVAILABLE SEALING CLAMP FOR VALVES



**Avoiding the handling
(opening or closing)**

SOLYD
Know-how and reactivity
For the fluidity of your projects